



Retail



Hospitality



Ticketing



Kiosk



**Multi-purpose,
Proven reliability**

SRP-350plus

SRP-350plus, the model that succeeded the SRP-350 was developed by Samsung in 2000 and has been one of the best sellers for more than 10 years across the world. It is a thermal receipt printer released to the market with upgraded performance as well as quality based on market-proven reliability over many years. The USB interface is integrated to the on-board system for the first time in a thermal receipt printer along with a dual interface, and the product receives good reviews by considering the convenience of users.

HIGHLIGHTS

- On board USB 2.0 Standard
 - Data cable included
- High speed USB 2.0
- Fast printing speed of up to 200mm per second
 - Optimized mechanical components and software to enable fast and stable printing
 - Improved CPU (32 Bit),
 - Larger memory capacity(4Kbytes)
 - Two color printing
- Long lasting auto-cutter up to 1.8 million cuts with easy paper-jam removal
- Easy paper loading
- Customer oriented software tools
 - Firmware download
 - Virtual Memory Switch Manager (VMSM)
 - NV image download
- 2D barcode printing supported
 - PDF417
 - QR Code
- Two different models
 - SRP-350plusC (with auto-cutter)
 - SRP-350plusA (without auto-cutter)

PRODUCT FEATURES

Fast printing of text and images

To speed up customer transactions without sacrificing performance, the SRP-350plus prints texts and graphics at a consistent speed of 200mm per second which is amazingly 30% faster than the industry leading the SRP-350. The SRP-350plus guarantees smooth and speedy printing without any interruptions during printing.

High-speed on board USB 2.0 standard

The SRP-350plus has USB 2.0 interface on the main board as a standard and has an additional interface slot for an optional Serial, Parallel or Ethernet interface card. New POS systems are starting to be equipped with USB 2.0 but most thermal printers in the market only support version 1.1 of USB whose full speed is 12 Mbps.



USB 2.0 on board

BIXOLON SRP-350plus now supports the new USB 2.0 standard with a High Speed of 480 Mbps. The USB 2.0 interface of the SRP-350plus has download compatibility for USB1.1.

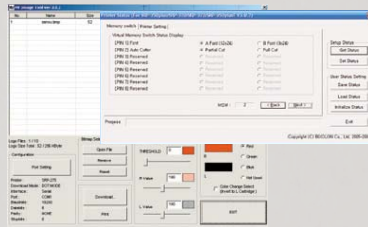
Longer lasting auto-cutter



The new auto cutter of the SRP-350plus has long lifespan up to 1.8 million cuts. It has specially designed components such as gears, cutting blade and covers to guarantee its lifetime. In addition, it also has a manual wheel conveniently positioned for easy clearing of the paper jam.

User friendly software tools

The new customer oriented utilities enable the users to directly access logo download (NV Image Tool), code page selection (Virtual Memory Switch Manager), firmware download and the other printer settings more easily and with No Hardware setting changes.



Two different models

- SRP-350plusC (with auto-cutter)
- SRP-350plusA (without auto-cutter)

SPECIFICATIONS

PRINT

- PRINTING METHOD : Direct thermal
- PRINTING SPEED : 200mm/sec (SRP-352plus : 195mm/sec)
- RESOLUTION : Standard : 180dpi(7dot/mm)
Optional : (SRP-352plus) : 203dpi(8dot/mm)
- CHARACTER SIZE : Font A : 12 X 24 / Font B : 9 X 24
Korean : 24 X 24 / Chinese : 24 X 24
- CHARACTERS PER LINE :
SRP-350plus - Font A : 42 / Font B : 56, Korean : 21 / Chinese : 21
SRP-352plus - Font A : 48 / Font B : 64, Korean : 24 / Chinese : 24
- CHARACTER SET : Alphanumeric Character : 95
Extended Character : 128 X 34 pages
International Character : 32
- BARCODES :
1D : EAN-13, EAN-8, Code 39, Code 93, Code 128, ITF,
Coda Bar, UPC-A, UPC-E
2D : PDF417, QR Code

PAPER

- WIDTH : 80mm
- PAPER ROLL DIAMETER : Max Ø 83mm
- PAPER LOADING : Easy Paper Loading

RELIABILITY

- PRINTER UNIT : 70 million lines
- TPH : 150 Km
- AUTO CUTTER : 1.8 million cuts

INTERFACE : USB 2.0 on board / Serial(RS-232C) / Parallel (IEEE 1284) / Ethernet

RECEIVE BUFFER : 4 Kbytes

NV IMAGE MEMORY : 256 Kbytes (Mono / Color)

USER DEFINE BUFFER : 12 Kbytes

EMULATION : ESC/POS™

DRIVER : Windows, OPOS, JPOS, Linux CUPS(Linux kernel 2.4.18 and later), Module Driver(Linux kernel 2.4.18 and later)

SENSOR : Paper Near End Sensor, Paper End Sensor, Cover Open Sensor

DRAWER PORT : 2 ports

POWER SUPPLY (SMPS) : AC 100~240V / DC 24V, 2.5A

DIMENSIONS : 145 X 195 X 146 (W X L X H mm)

OPERATING TEMPERATURE : 0 ~ 45°C

OPTION

- SMPS BUILT-IN COVER (RSB-350)
- WALL MOUNT (RWM-350)
- SPLASH PROOF COVER (RSC-350plus)
- BIXOLON MELODIST (RMB-100)
- VERTICAL STAND (RVS-350)